



# Air Driven Oxygen Boosters Model 26968

For life support depend on Haskel Oxygen Boosters

Filling aircraft on-board O<sub>2</sub> cylinders for commercial, military and private fleets. Transferring O<sub>2</sub> into various high pressure receivers for deep ocean diving support, commercial or military. These are just two examples of the uses for **Model 26968** oxygen boosters that have provided cost savings and increased safety for many years.

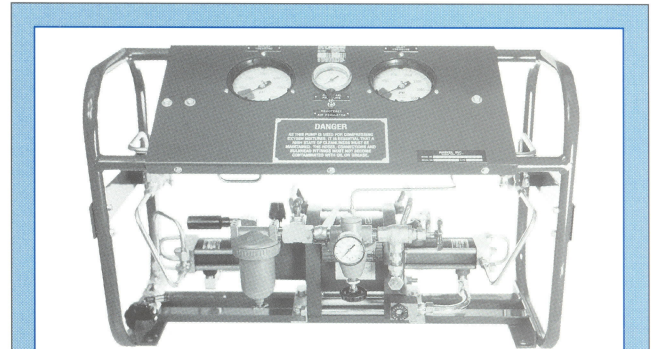
This model will pump from high or medium pressure sources and will also function effectively to collect and transfer the gas from partially depleted supply cylinders to "top off" other cylinders to maximum pressure. Conventional industrial, shipboard or contractor type compressed air sources are normally used for power. All motive power and controls are completely pneumatic with no electrical connections required.

The basic booster is two-stage, rated for continuous duty compression ratios of over 15:1, intermittent to 40:1.

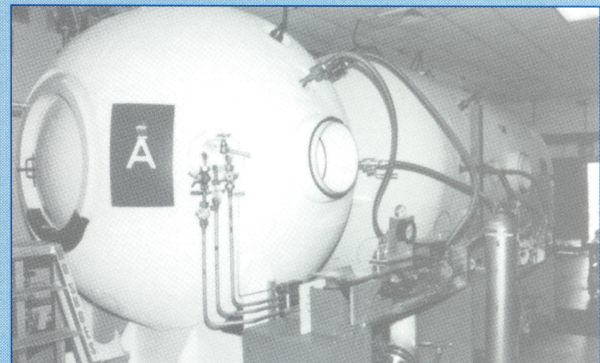
A pneumatic control package continually monitors both inlet cylinder pressure and outlet receiver pressure, stopping the booster automatically when desired outlet or minimum inlet pressure is reached, permitting unattended operation.

## FEATURES

- Drive is a low friction, slow speed cycling air cylinder, designed for continuous duty without airline lubrication. Vented distance pieces insure hydrocarbon-free gas section operation. High pressure oxygen seals are wear compensating, immune to sudden failure and operate completely non-lube, oil free.
- Very cold air (as low as -20° F) is a natural by-product from the air powered drive exhaust.



32" long x 14" wide x 24" high  
Approx. weight: 115 lbs.



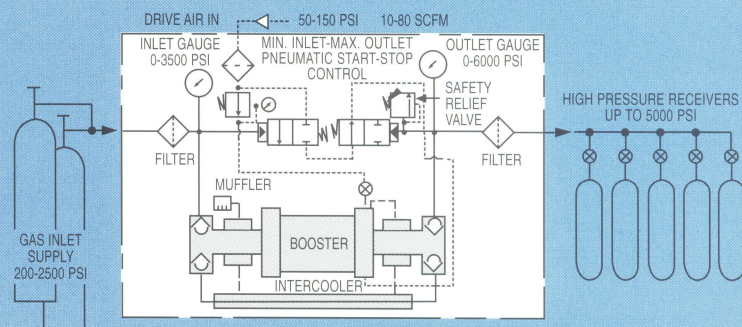
Hyperbaric Chambers Used  
for Experimental Diving.

This frigid exhaust air is channeled through a system of cooling jackets and interstage cooler, resulting in high pressure cylinder temperatures well below limits needed for long life of critical parts.

- Inlet gas supply pressure acts directly through the opposed piston construction to assist the air drive during the compression stroke, conserving power required by the drive in direct proportion to the gas supply pressure.

## TYPICAL APPLICATION

### BASIC SCHEMATIC HASKEL OXYGEN BOOSTER UNIT MODEL 26968



**CAUTION** High pressure gas can be dangerous if improperly handled

Air Driven Oxygen Boosters Model 26968



## SPECIFICATIONS

- **Booster:** Air driven, balanced opposed piston type, two stage.
- **High pressure Oxygen Chambers:** Non-lube, hydrocarbon-free, triple sealed and vented from the drive air chest.
- **High Pressure Tubing & Fittings:** Stainless steel, 5,000 psi maximum oxygen working pressure.
- **Air Drive Section:** No oiling required, corrosion resistant factory lubed at assembly, 150 psi max. drive pressure.
- **Particle Filters:** Inlet and outlet gas: 5 micron. All stainless steel.
- **Gauges:** Stainless steel tube, solid front 4-1/2" dial size.
- **Port Sizes:** Inlet and outlet gas:  $\frac{1}{2}$ " NPT female; Air Drive:  $\frac{1}{2}$ " NPT female.
- **Control Range Adjustment:**  
Inlet minimum: 150 to 850 psi cutout  
Outlet maximum: 800 to 5,000 psi cutout  
Safety relief (outlet): 800 to 5,000 psi
- **Cooling:** With air exhaust to both stages and intercooler.
- **Noise:** 80 db range pulses, depending on working pressure (measured at 30 inches from booster).
- **Maintenance:** Simple seal kit replacement.
- **Installation:** No special foundation, no tie down required, and no electrical connections.

## PERFORMANCE

| EXAMPLES OF PERFORMANCE WITH AIR DRIVE POWER OF 50 SCFM (C) AIR FLOW AT AIR DRIVE PRESSURE INDICATED |            |                               |      |      |
|--|------------|-------------------------------|------|------|
| OXYGEN GAS PRESSURE — PSI  |            | OXYGEN OUTLET GAS FLOW — SCFM |      |      |
| INLET  | OUTLET (B) | Air Drive PSI                 |      |      |
|  |            | 60                            | 80   | 100  |
| 250  | 1500       | 3.5                           | 4.0  | 4.0  |
| 250  | 2000       | 2.1                           | 3.6  | 3.6  |
| 250  | 3000       | (A)                           | (A)  | 2.5  |
| 1000   | 1500       | 8.7                           | 14.7 | 15.0 |
| 1000   | 2500       | (B)                           | 9.7  | 13.7 |
| 1000   | 3500       | (B)                           | 9.6  | 13.6 |
| 1500   | 2000       | (B)                           | 14.7 | 20.7 |
| 1500   | 2500       | (B)                           | (B)  | 16.1 |
| 1500   | 3000       | (B)                           | (B)  | (B)  |
| 2000   | 2500       | (B)                           | (B)  | 21.6 |

- (A) Outlet stall (maximum gas outlet pressure is: Air Drive psi x 30 plus 2x gas inlet psi).
- (B) Interstage stall (maximum gas inlet pressure is air drive psi x 15 if outlet exceeds air drive psi x 30. If it does not, maximum gas inlet is air drive psi x 30).
- (C) If less air flow is available, outlet gas rates will decrease about in proportion.



**Haskel International, Inc.**  
100 East Graham Place  
Burbank, California 91502 • USA  
Telephone: (818) 843-4000  
Fax: (818) 556-2549 or (818) 841-4291  
www.haskel.com



**Haskel Energy Systems Ltd.**  
North Hylton Road  
Sunderland SR5 3JD • England • UK  
Tel: 44-191-549-1212 • Fax: 44-191-549-0911

**Haskel (Asia) Pte. Ltd.**  
23 Tagore Lane #03-07  
Tagore 23 Warehouse Complex  
Singapore 787601  
Tel: 65-6455-7559 • Fax: 65-6455-2841  
www.haskel.com.sg

**Haskel Australasia Pty. Ltd.**  
P.O. Box 267  
Salisbury, Qld. 4107 • Australia  
Tel: 61-7-3277-9118 • Fax: 61-7-3277-6129  
www.haskel.com.au

**Haskel HochdruckSysteme GmbH**  
D-46485 Wesel  
Fritz-Haber Strasse • Germany  
Tel: 49-281-98-48-00 • Fax: 49-281-98-48-020  
www.haskel.de

**Haskel-General Pneumatic**  
4 rue du haut de la Cruppe  
F-59650 Villeneuve d'Ascq • France  
Tel: 33-320-04 66 00 • Fax: 33-320-33 31 95

**Haskel Benelux B.V.**  
Cobaltstraat 28  
2718 RN Zoetermeer • Netherlands  
Tel: 31-79-361 84 72 • Fax: 31-79-360 05 60

**Haskel España S.R.L.**  
Paseo Ubarburu 81 • Edif. 5 • 1ª Planta  
Locales 1 y 2 • Pol. 27 Martutene  
20115 Astigarraga • Gipuzkoa • Spain  
Tel: 34-943-47 45 66 • Fax: 34-943-45 11 86  
www.haskel-es.com

**Haskel Energy Systems Limited**  
Unit 14, Airways Industrial Estate,  
Pitmedden Road  
Dyce, Aberdeen AB21 ODT • Scotland  
Tel: 01224-771784 • Fax: 01224-723642

**Haskel Italiana S.R.L.**  
via Carabelli 28  
21041 Albizzate • Varese • Italy  
Tel: 39-331-987596 • Fax: 39-331-987597  
www.haskel.it

For further information on Haskel products, visit our website at: [www.haskel.com](http://www.haskel.com)

Printed in USA