

HYDRAULIC GROUND POWER UNITS



Key Specifications:

- *Mobile Equipment – Towable*
- *Multiple Testing Ports*
- *Max. Adjustable Operating Conditions: 100 LPM & 350 Bar*
- *Touch PC/HMI Interface with Real Time Values & Data Acquisition*
- *Latest GEN Intelligent PLC Programmed with Multi Safety Interlocks*
- *In-Built Oil Storage, Self Cooling System & Wide range of sensor devices*
- *Suitable for Off Road transportation and to operate in extreme climatic conditions*
- *Filtration System for maintaining Fluid Cleanliness to NAS 1638*
- *Capable of De-aerating, De-hydrating, Draining, Flushing & to Refill the hydraulic systems*

HIGH PRESSURE TECHNOLOGY

Our Major Clients:



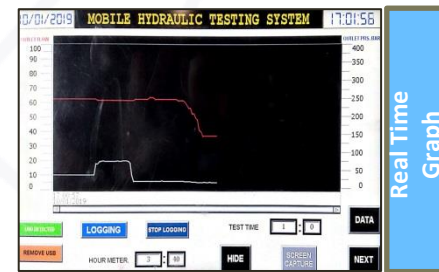
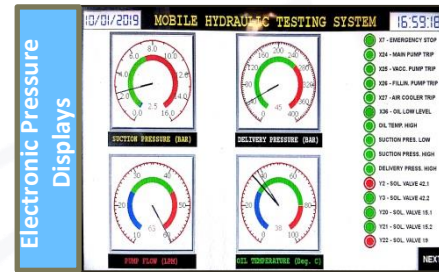
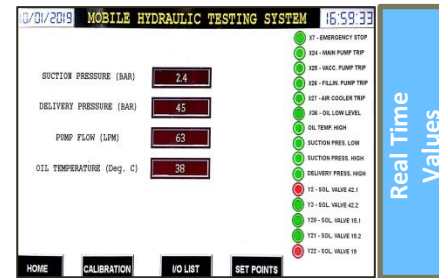
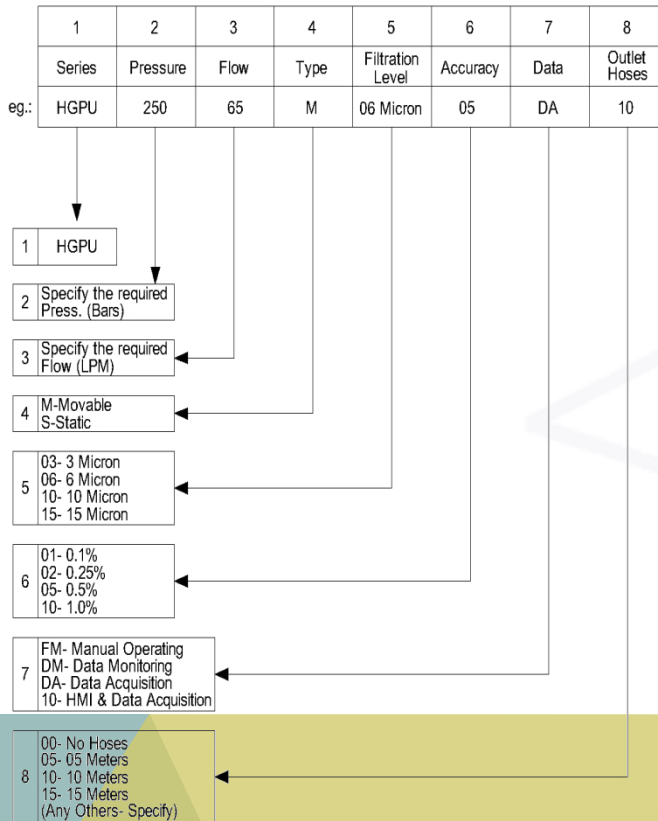


GEM PRESSURE SYSTEMS (INDIA) PVT.LTD



The HGPU series is a proven and highly reliable Hydraulic Testing Pressure cum Flow Testing Machine used for testing components like QRC Couplings, valves, tubes, hose, etc., up to a pressure of 350 Bar. System is capable to self check the faults and update the user from time to time. The comfort design of the unit with its integrated Hoses, Hydraulic Reservoir, Pumps, Valves, Hydraulic Components, Manifolds, etc. can be easily towed operating personnel without the external movers' assistance.

Model Selection Chart:



NOTE: Customized systems are available according to User's Application

Corporate Office:

4-2-254, Old Bhoiguda,
Secunderabad - 500 003
Telangana, India
Ph.: +91-40-27711742

E-Mail: info(at)gemengg(dot)com / sales(at)gemengg(dot)com

Factory:

5-11, Shareef Nagar, RCI Road,
Near Vidya Dayini IT College, RR District,
Hyderabad - 500 005, Telangana, India
Ph.: +91-630321709 / 9963144481
Website: www.gemengg.com